



Essex.

Essex is an exceptionally versatile contract product that brings both style and durability to any project. Manufactured from tightly tufted Stainproof Miracle Fibre (Polypropylene), Essex is extremely easy to clean and maintain.

Product Information

Essex is backed with the advanced MiracleBac, making it non-allergenic and moisture resistant. This combination makes Essex an exceptionally hard-wearing product

that will provide superior performance and long-lasting good looks to your chosen project. The Essex range is available in a variety of beautifully-coordinating colours.



Alto



Bourbon



Gin



Liqueur



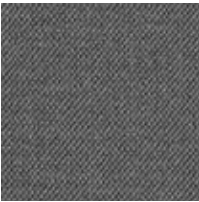
Merlot



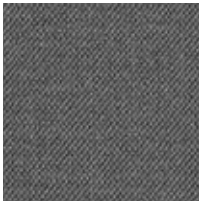
Port



Saki



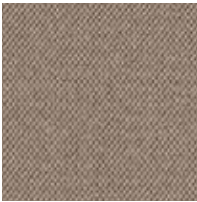
Sambuca



Schnapps



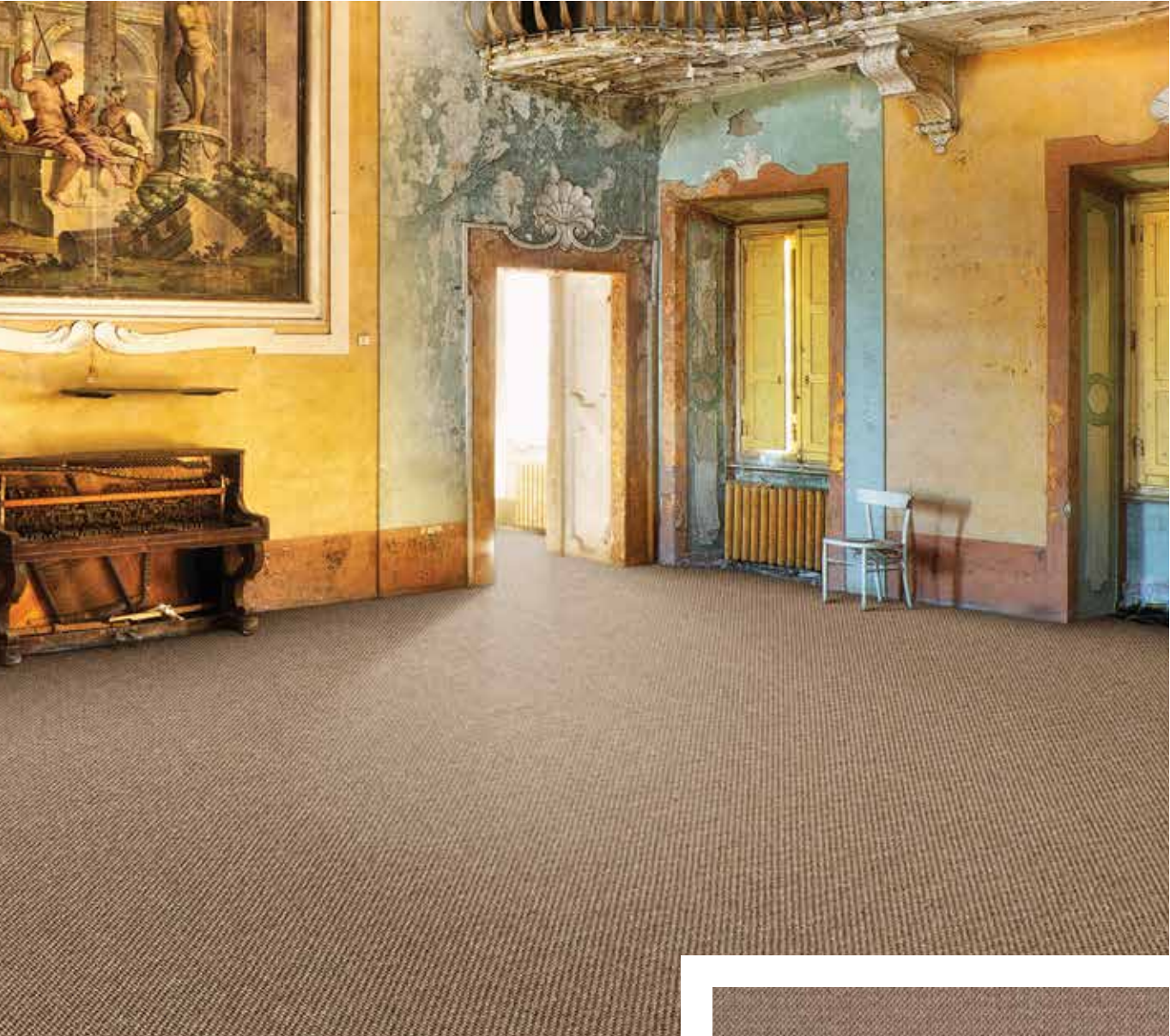
Sherry



Vodka



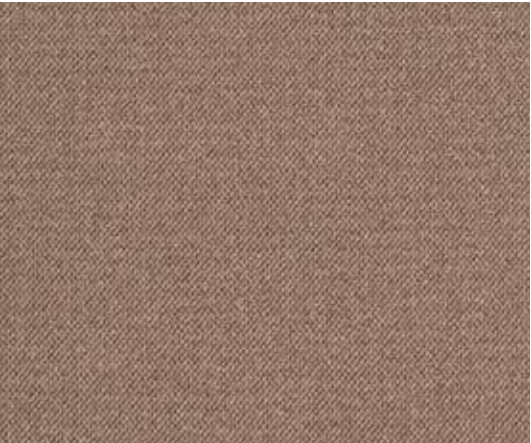
Whiskey



Essex | Bourbon

Extended Specifications

Construction	Tufted Patterned Loop Pile
Product Description	Medium Commercial, PP, Tufted Loop Pile, Broadloom
Yarn Type	Stainproof Miracle Fibre (Polypropylene)
Yarn Mass	610g/m2
Use Classification	General/Medium Commercial
Pile Height	4mm (±0.5mm)
Total Thickness	7mm (±0.5mm)
Total Mass	±1704g/m2**
Width	4m
Machine Gauge	1/10"
Pattern Repeat	±10mm x ±14mm (W x L)
Stitches/10cm	34
Fire Index	3 (SANS 10177-IV)
Colour fastness to:	
(i) Light	7 (ISO 105-B02)
(ii) Rubbing	(a) Wet 4-5 (ISO 105-X12)
Rubbing	(b) Dry 4-5 (ISO 105-X12)
(iii) Water	4-5 (ISO 105-E01)
Electrostatic Propensity	Less than 2.0kV (ISO 6356 & EN1307)
Static Control	Permanent
VOC Tested	Passed



BILL OF QUANTITIES:

- Belgotex ESSEX 4m broadloom is manufactured from Stainproof Miracle Fibre (Polypropylene).
- This product is to be laid in accordance with the SANS 10186 fitting code of practice.
- Belgotex recommends the use of carpet protector mats where castor wheels are used.