



Touch Design Collection: Chaos.

This contemporary carpet with its blended “marble” effect will make a statement in sophisticated interiors.

Product Information

As part of the inimitable “Touch Design” collection, this tufted broadloom carpet is both interesting to the eye (in its disarray) as well as cleverly designed to hide soiling without losing any appeal. The patterned

colour placement of superior Stainproof SDX produces a modern, delicate design that combines elegant style with performance, ideal for luxury boutiques, presidential suites and elite members-only establishments.



Diluted Blue



Earthstone



Gate Crasher



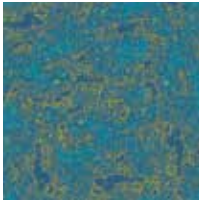
Gorge



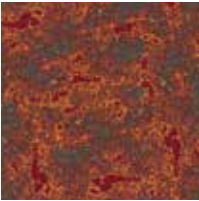
Sweet Red



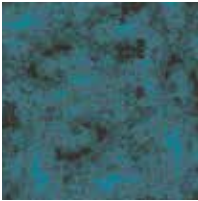
Colour 01*



Colour 02*



Colour 03*



Colour 04*

***Non-stocking Colours**
As these colours are non-stocking, minimum production quantities apply. Please contact your nearest Belgotex representative for more information.



- BILL OF QUANTITIES:
- Belgotex CHAOS 4m broadloom is manufactured from Stainproof SDX & Stainproof Eco SDX Blend (Solution Dyed Nylon).
 - This product is to be laid in accordance with the SANS 10186 fitting code of practice.
 - Belgotex recommends the use of carpet protector mats where castor wheels are used.



Extended Specifications

Construction	Patterned Colour Placement Cut Pile
Product Description	Heavy Commercial, SDN, Tufted Broadloom
Yarn Type	Stainproof SDX & Stainproof Eco SDX (Solution Dyed Nylon)
Yarn Mass	1200g/m2
Use Classification	Heavy Commercial
Pile Height	7mm (±0.5mm)
Total Thickness	10mm (±0.5mm)
Total Mass	±2553g/m2**
Width	4m
Pattern Repeat	±130cm x ±95cm (W x L)
Machine Gauge	1/10"
Stitches/10cm	40
Fire Index	3 (SANS 10177-IV) Cfl-s1(EN ISO 9239-1)
Colour fastness to:	
(i) Light	7 (ISO 105-B02)
(ii) Rubbing	(a) Wet 4-5 (ISO 105-X12)
Rubbing	(b) Dry 4-5 (ISO 105-X12)
(iii) Water	4-5 (ISO 105-E01)
Electrostatic Propensity	Less than 2.0kV (ISO 6356 & EN1307)
Static Control	Permanent
VOC Tested	Passed