



Mod Design Collection: Enterprise.

Give every business a good grounding with the graduated shading of Enterprise in either an airy light grey or a sturdy, definitive dark grey, for up-to-the-minute style.

Product Information

Add one or two punchy coloured patches and you're guaranteed to grab attention. Ideal for heavy commercial applications including restaurants, retail outlets or civic

centres such as libraries or universities. Enterprise provides an interchangeable tufted tile that's hard-wearing and reliable, that can be adapted to any business's needs.



Bonnet*



Festive*



Glitter*



Gloss*



Opaque*



Shock Wave*



Spark Light*

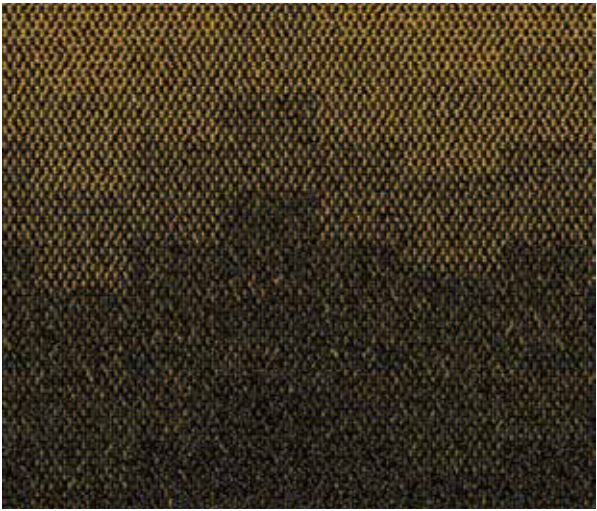
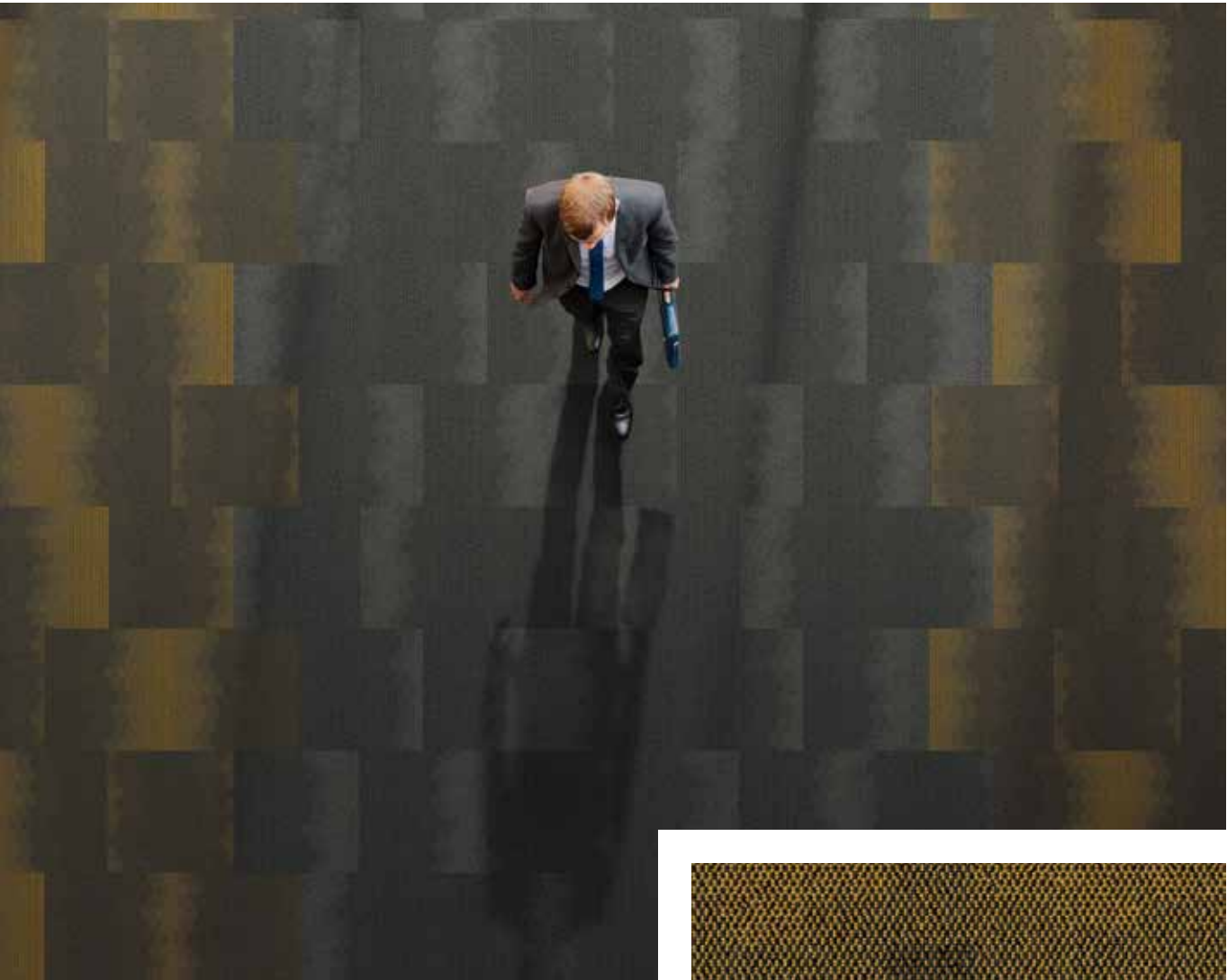


Zodiac*

***Shock Wave and Spark Light** are also available in 30cm x 120cm NexBac plank tile, as stocking colours. Please contact your nearest Belgotex representative for more information

***Non-stocking Colours** As these colours are non-stocking, minimum production quantities apply. Please contact your nearest Belgotex representative for more information.

- BILL OF QUANTITIES:
- Belgotex ENTERPRISE 50cm x 50cm NexBac tiles are manufactured from Stainproof SDX and Stainproof Eco SDX Blend (Solution Dyed Nylon).
 - This product is to be laid in accordance with the SANS 10186 fitting code of practice.
 - Belgotex ENTERPRISE can be installed in the following directions: tessellated, monolithic, random and ashlar.
 - Belgotex recommends the use of carpet protector mats where castor wheels are used.



Extended Specifications

Construction	Tufted Multi Scroll Loop Pile
Product Description	Heavy Commercial, SDN, Tufted Loop Pile, Bitumen Tile
Yarn Type	Stainproof SDX and Stainproof Eco SDX (Solution Dyed Nylon)
Yarn Mass	620g/m2
Recycled Content	EcoBac (EOS)/NexBac Eco (available on request only) & Pile Yarn
Use Classification	Heavy Commercial
Pile Height	2mm to 5.5mm (±0.5mm)
Total Thickness	7mm (±0.5mm)
Total Mass	±4265g/m2**
Standard Tile Size	50 x 50cm***
Machine Gauge	1/10"
Stitches/10cm	45
Fire Index	2 (SANS 10177-IV)
Colour fastness to:	
(i) Light	7 (ISO 105-B02)
(ii) Rubbing	(a) Wet 4-5 (ISO 105-X12)
Rubbing	(b) Dry 4-5 (ISO 105-X12)
(iii) Water	4-5 (ISO 105-E01)
Electrostatic Propensity	Less than 2.0kV (ISO 6356 & EN1307)
Static Control	Permanent
VOC Tested	Passed

** Weighted Average *** Also available in 60 x 60cm, 1m x 50cm, 1m x 1m NexBac tiles, 25cm x 100cm and 30cm x 120cm NexBac plank tiles. EcoBac is available on request for 50 x 50cm and 1m x 1m tiles. As these sizes and backings are not standard, minimum production quantities apply. Please contact your nearest Belgotex representative for more information.