



Mod Design Collection: Cirrus.

This mottled design with plain or colourful pattern in highlight shades means the sky’s the limit for design possibilities.

Product Information

Mix ‘n match tiles and different lay directions for texture and tone in heavy traffic areas and even use them to direct customers to different areas within a commercial space, office or retail environment.



Stratus



Nimbus



MD 01*



MD 02*



MD 03*



MD 04*



MD 05*

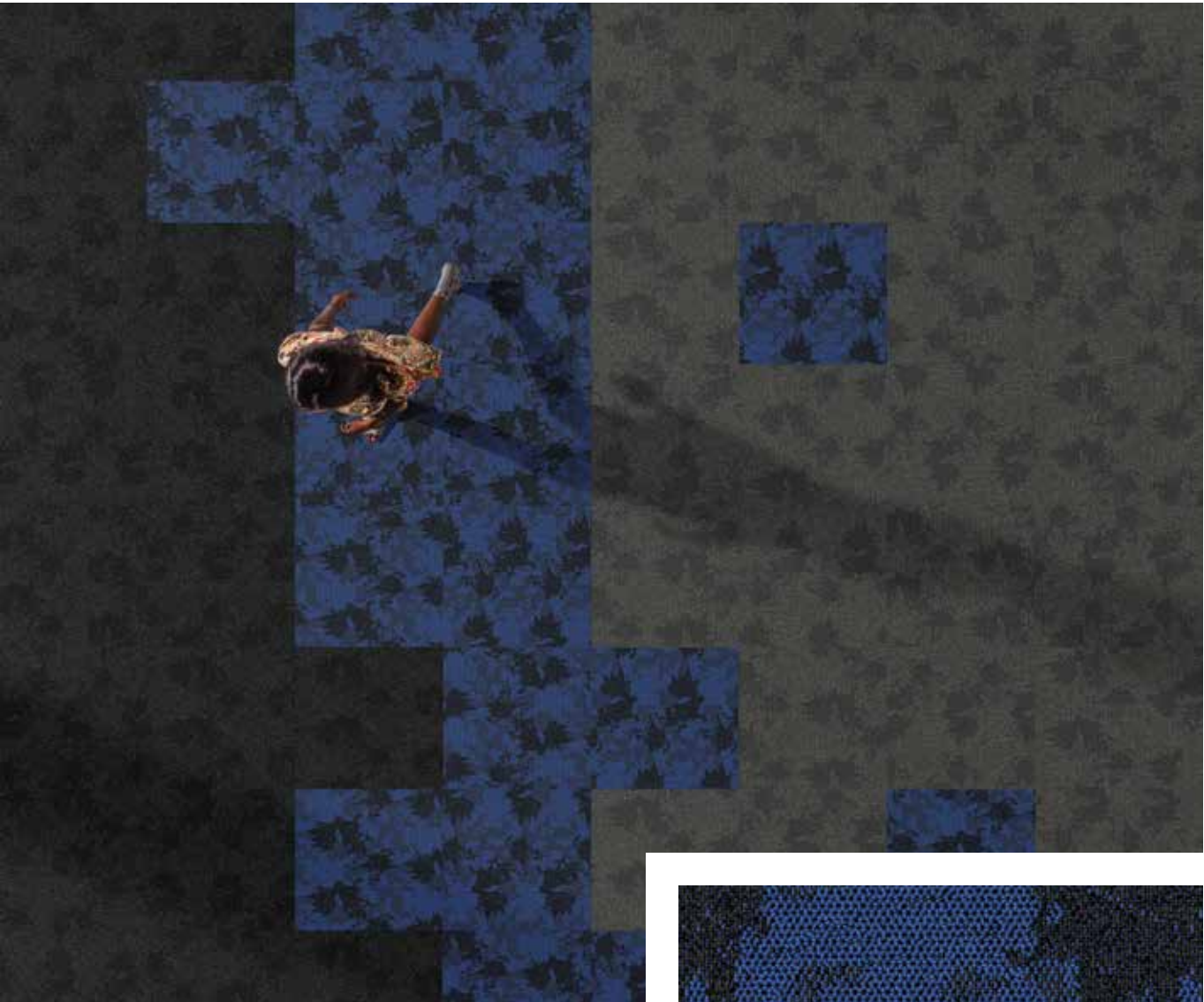


MD 06*

***Non-stocking Colours**
As these colours are non-stocking, minimum production quantities apply. Please contact your nearest Belgotex representative for more information.

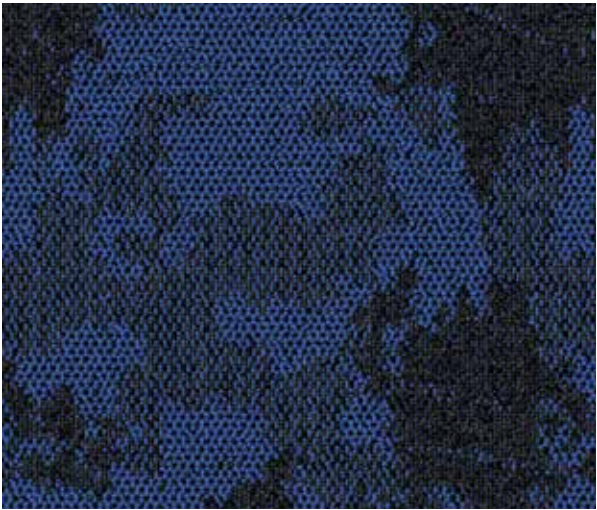


- BILL OF QUANTITIES:
- Belgotex CIRRUS 50cm x 50cm NexBac tiles are manufactured from Stainproof SDX and Stainproof Eco SDX Blend (Solution Dyed Nylon).
 - This product is to be laid in accordance with the SANS 10186 fitting code of practice.
 - Belgotex CIRRUS can be installed in the following directions: tessellated, monolithic and random.
 - Belgotex recommends the use of carpet protector mats where castor wheels are used.



Extended Specifications

Construction	Tufted Multi Scroll Loop Pile
Product Description	Heavy Commercial, SDN, Tufted Loop Pile, Bitumen Tile
Yarn Type	Stainproof SDX and Stainproof Eco SDX (Solution Dyed Nylon)
Yarn Mass	640g/m2
Recycled Content	EcoBac (EOS)/NexBac Eco (available on request only) & Pile Yarn
Use Classification	Heavy Commercial
Pile Height	2.5mm, 3.5mm, 5.5mm (±0.5mm)
Total Thickness	7mm (±0.5mm)
Total Mass	±4285g/m2**
Standard Tile Size	50 x 50cm***
Machine Gauge	1/10"
Stitches/10cm	45
Fire Index	2 (SANS 10177-IV)
Colour fastness to:	
(i) Light	7 (ISO 105-B02)
(ii) Rubbing	(a) Wet 4-5 (ISO 105-X12)
Rubbing	(b) Dry 4-5 (ISO 105-X12)
(iii) Water	4-5 (ISO 105-E01)
Electrostatic Propensity	Less than 2.0kV (ISO 6356 & EN1307)
Static Control	Permanent
VOC Tested	Passed



** Weighted Average *** Also available in 60 x 60cm, 1m x 50cm, 1m x 1m NexBac tiles, 25cm x 100cm and 30cm x 120cm NexBac plank tiles. EcoBac is available on request for 50 x 50cm and 1m x 1m tiles. As these sizes and backings are not standard, minimum production quantities apply. Please contact your nearest Belgotex representative for more information.